



# Galectin-9 Polyclonal Antibody

<b>Catalog No</b>	YP-Ab-00408
<b>Isotype</b>	IgG
<b>Reactivity</b>	Human;Mouse;Rat
<b>Applications</b>	WB;IHC;IF;ELISA
<b>Gene Name</b>	LGALS9
<b>Protein Name</b>	Galectin-9
<b>Immunogen</b>	The antiserum was produced against synthesized peptide derived from human LEG9. AA range:51-100
<b>Specificity</b>	Galectin-9 Polyclonal Antibody detects endogenous levels of Galectin-9 protein.
<b>Formulation</b>	Liquid in PBS containing 50% glycerol, 0.5% BSA and 0.02% sodium azide.
<b>Source</b>	Polyclonal, Rabbit,IgG
<b>Purification</b>	The antibody was affinity-purified from rabbit antiserum by affinity-chromatography using epitope-specific immunogen.
<b>Dilution</b>	Western Blot: 1/500 - 1/2000. Immunohistochemistry: 1/100 - 1/300. Immunofluorescence: 1/200 - 1/1000. ELISA: 1/10000. Not yet tested in other applications.
<b>Concentration</b>	1 mg/ml
<b>Purity</b>	≥90%
<b>Storage Stability</b>	-20°C/1 year
<b>Synonyms</b>	LGALS9; Galectin-9; Gal-9; Ecalectin; Tumor antigen HOM-HD-21
<b>Observed Band</b>	40kD
<b>Cell Pathway</b>	Cytoplasm . Nucleus . Secreted . May also be secreted by a non-classical secretory pathway (By similarity). Secreted by mesenchymal stromal cells upon IFNG stimulation (PubMed:23817958). .; [Isoform 2]: Secreted .; [Isoform 3]: Secreted .
<b>Tissue Specificity</b>	Peripheral blood leukocytes and lymphatic tissues. Expressed in lung, liver, breast and kidney with higher levels in tumor endothelial cells than normal endothelium (at protein level) (PubMed:24333696). Expressed in trophoblast cells in decidua and placenta in pregnancy (at protein level) (PubMed:23242525, PubMed:25578313). Isoform 2 is the most abundant isoform expressed in endothelial cells (PubMed:24333696). Upon endothelial cell activation isoform 2 expression decreases while expression of isoform 3 and isoform 5 increases (PubMed:24333696). Isoform 4 decreases in pathological pregnancy (PubMed:23242525).
<b>Function</b>	alternative products:Additional isoforms seem to exist,domain:Contains two homologous but distinct carbohydrate-binding domains.,function:Binds galactosides. Has high affinity for the Forssman pentasaccharide. May play a role in thymocyte-epithelial interactions relevant to the biology of the thymus. Inhibits



cell proliferation. The isoform Short acts as an eosinophil chemoattractant. Is a ligand for HAVCR2/TIM3. Induces T-helper type 1 lymphocyte (Th1) death.,online information:Galectin-9,similarity:Contains 2 galectin domains.,subcellular location:May also be secreted by a non-classical secretory pathway.,subunit:Monomer.,tissue specificity:Peripheral blood leukocytes and lymphatic tissues. Overexpressed in Hodgkin's disease tissue.,

## Background

The galectins are a family of beta-galactoside-binding proteins implicated in modulating cell-cell and cell-matrix interactions. The protein encoded by this gene is an S-type lectin. It is overexpressed in Hodgkin's disease tissue and might participate in the interaction between the H&RS cells with their surrounding cells and might thus play a role in the pathogenesis of this disease and/or its associated immunodeficiency. Multiple alternatively spliced transcript variants have been found for this gene. [provided by RefSeq, Jul 2008],

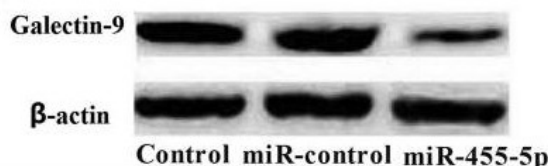
## matters needing attention

Avoid repeated freezing and thawing!

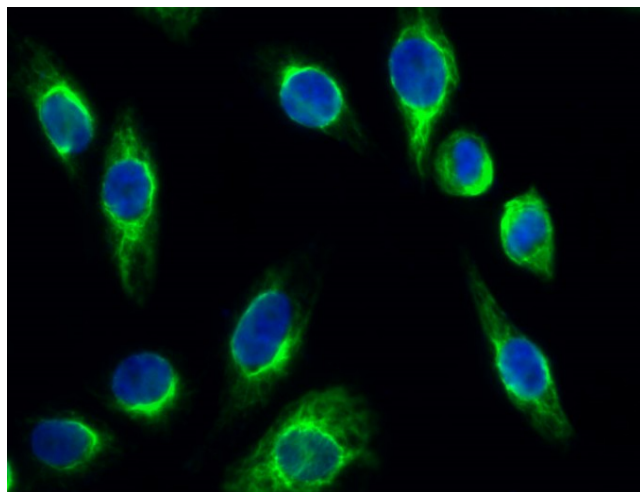
## Usage suggestions

This product can be used in immunological reaction related experiments. For more information, please consult technical personnel.

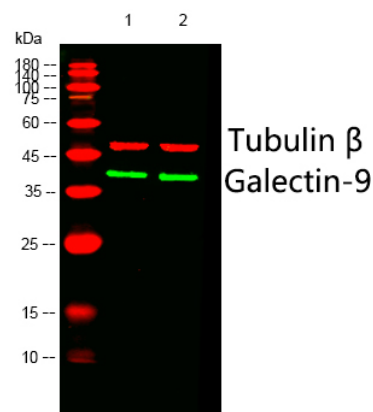
## Products Images



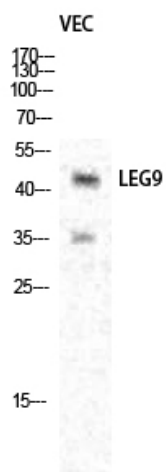
Yang, Qianqian, et al. "miR-455-5p functions as a potential oncogene by targeting galectin-9 in colon cancer." *Oncology letters* 13.3 (2017): 1958-1964.



Immunofluorescence analysis of Hela cell. 1, Galectin-9 Polyclonal Antibody (green) was diluted at 1:200 (4° overnight). 2, Goat Anti Rabbit Alexa Fluor 488 Catalog: RS3211 was diluted at 1:1000 (room temperature, 50min). 3 DAPI (blue) 10min.



Western blot analysis of lysates from 1) VEC, 2) HepG2 cells, (Green) primary antibody was diluted at 1:1000, 4° over night, Dylight 800 secondary antibody (Immunoway: RS23920) was diluted at 1:10000, 37° 1hour. (Red) Tubulin β Monoclonal Antibody (5G3) (Immunoway: YM3030) antibody was diluted at 1:5000 as loading control, 4° over night, Dylight 680 secondary antibody (Immunoway: RS23710) was diluted at 1:10000, 37° 1hour.



Western Blot analysis of various cells using Galectin-9  
Polyclonal Antibody diluted at 1:1000



Western Blot analysis of HepG2 cells using Galectin-9  
Polyclonal Antibody diluted at 1:1000